

zenith<sup>®</sup>  
instant boiling water



New electronic Zenith Hydroboil<sup>®</sup>  
Cuts energy consumption dramatically



Thousands of Zenith instant boiling water systems have been installed throughout the city of Auckland.



Dubai: Many landmark buildings, including InterContinental Dubai Festival City, feature instant boiling water systems.



Hong Kong: Instant boiling water is installed throughout the stunning Chek Lap Kok Airport.



## No waiting for water to boil with Zenith instant boiling water

Now Zenith brings the practical advantages of instant boiling water to kitchens world-wide

### **Saves time**

No more time wasted waiting for water to boil – Zenith gives boiling water instantly, at the touch of a tap.

### **Saves energy**

No energy wasted boiling more water than needed – fingertip control brings you a cup-full or pot-full at a time.

### **Saves space**

No cluttered kitchen counters – Zenith instant boiling water eliminates the need for kettles and exposed power cords.

### **Saves money**

Costs little to run – thanks to energy-efficient design and electronic controls minimising energy consumption.



**Frankfurt:** the head office of the Dresdner Bank is equipped with Hydroboil instant boiling water systems.



**London:** offices of The Greater London Authority are also home to instant boiling water systems.



## New electronic Zenith Hydroboil: six models to choose from

- Choice of three capacities
- Choice of two case finishes
- All have the option of triple action water filtration
- All are covered by extended warranty

### Zenith Hydroboil 3.0 Litre in white steel or stainless steel

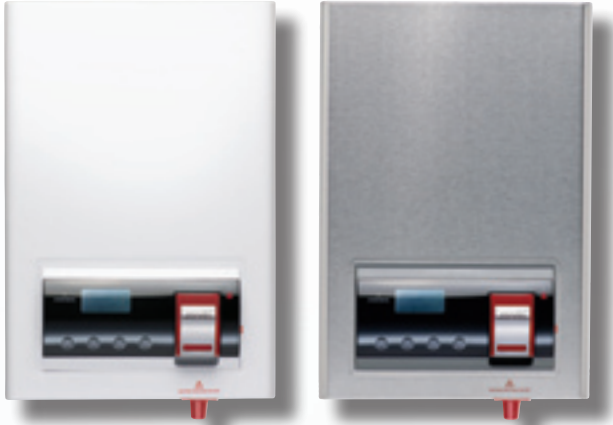


Zenith Hydroboil 3.0 Litre gives up to 18 cups at one time with a recovery rate of up to 100 cups per hour. Ample capacity for smaller offices, shops and factories.

White steel case order code 303662  
Stainless steel case order code 303661



**Zenith Hydroboil 5.0 Litre in white steel or stainless steel**



Zenith Hydroboil 5.0 Litre gives up to 30 cups at one time with a recovery rate of up to 150 cups per hour. Most popular size for office, shop and factory kitchens.

White steel case order code 305662  
Stainless steel case order code 305661

**Zenith Hydroboil 7.5 Litre in white steel or stainless steel**



Zenith Hydroboil 7.5 Litre gives up to 45 cups at one time with a recovery rate of up to 150 cups per hour. Bigger capacity for busy kitchens, canteens and restaurants.

White steel case order code 307662  
Stainless steel case order code 307661





## New electronic Zenith Hydroboil: brings you more safety features than ever



### For a healthier choice, Zenith Hydroboil has the option of triple-action water filtration

- A special five-micron Zenith filter removes particulates contaminating the water supply.
- The filter also inhibits accumulation of mineral scale in the boiling water chamber.
- Better still, it reduces chlorine and other chemicals as per NSF/ANSI 42 and/or 53.
- Provides crystal-clear instant boiling water for great-tasting tea, coffee, or cooking.



**1. Fingertip control for safe cup filling.**  
Allows you to start and stop the boiling water flow with great accuracy.



**2. Lift to lock flow "on" to fill pots.**  
Allows you to fill teapots and coffee plungers safely "hands free".



**3. Safety lock prevents accidental use.**  
Requires combined finger and thumb adult operation to dispense boiling water.



INSTANT BOILING WATER



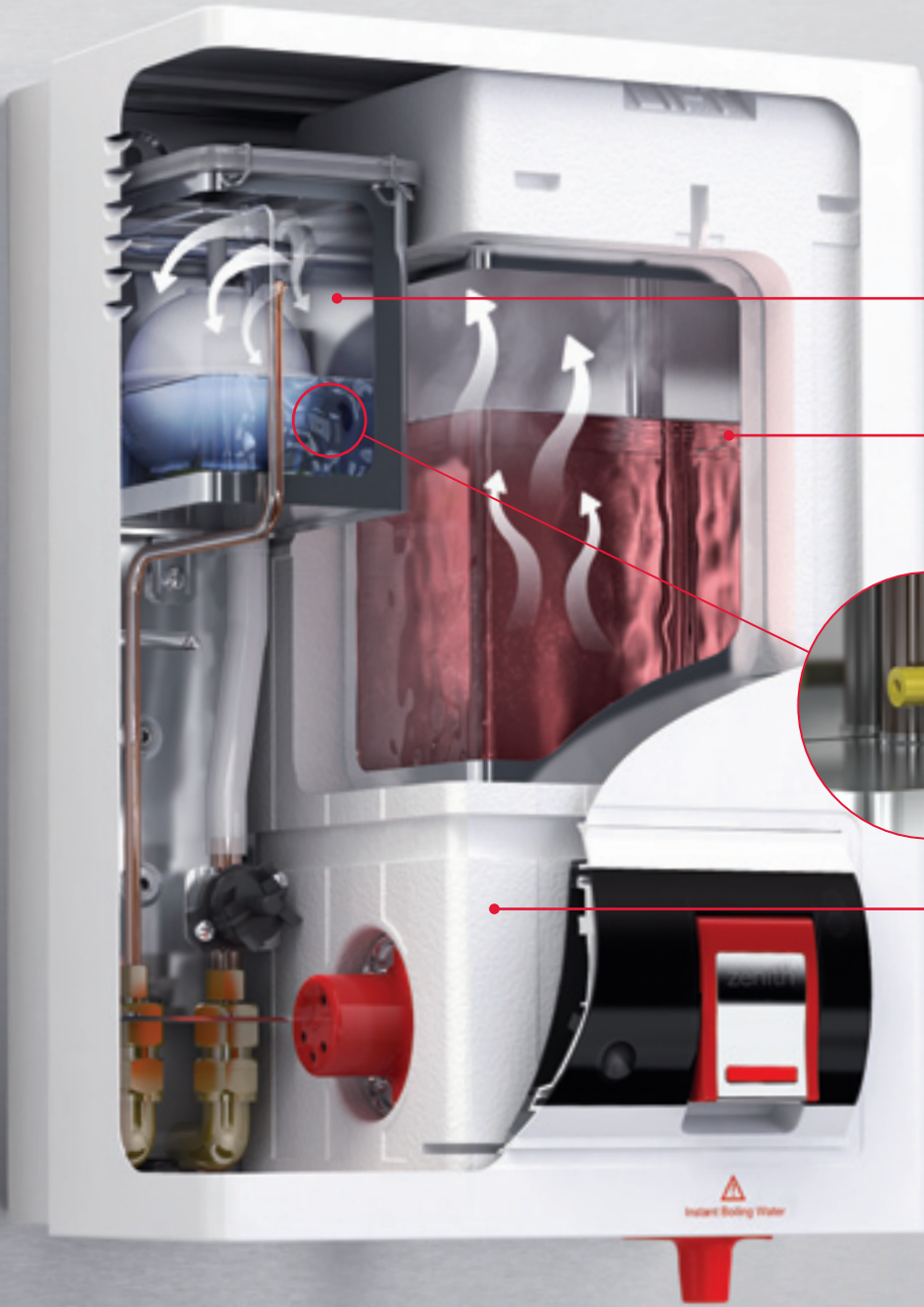
4. Locked touch-pad programming. Presets clock and variable functions, sets storage temperature 65°C to 100°C.



5. Base outlet improves pouring view. Cup level is close to sink level – making it easier to see and control.

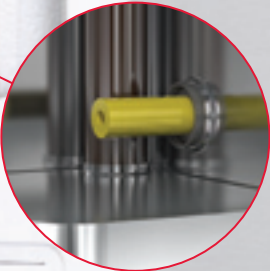


6. Signals when filter change is due. Saves any worries about missing recommended filter changing dates.



**Patented twin chamber technology.**  
Stores incoming cold water separately from boiling water.

**Patented steam-heat-boost system.**  
Recycles energy from steam to pre-heat incoming cold water.



**Patented Teflon™ metering tube.**  
Regulates water inflow so boiling water is maintained at set temperature.

**Moulded high temperature insulation.**  
Superior heat retention performance minimizes boiling water heat loss.

  
Instant Boiling Water

# New electronic Zenith Hydroboil: cuts energy consumption 5 ways



## 1. Steam-heat-boost recycles steam heat

Steam from stored boiling water is recycled within the Zenith Hydroboil to pre-heat incoming cold water, stored in a separate cold water cistern. A patented metering tube accurately controls the flow of pre-heated water into the boiling chamber, to maintain stored water at boiling point.



## 2. Power-Pulse™ energy-saving technology

New Power-Pulse energy-saving technology reduces power consumption dramatically. Power-Pulse applies full power to heat boiling water only during heavy-usage periods. Power-Pulse cuts back to micro-pulse power during light usage periods, or when unused. Power-Pulse also maintains boiling water temperature more precisely than ever before. Power-Pulse is the latest in electronic control technology, and is exclusive to Zenith world wide.



## 3. Sleep Mode powers down when inactive

Sleep-when-unused feature can be pre-set to activate after 2 or 4 hours of non-use. Stored water is maintained at  $>65^{\circ}\text{C}$  in any sleep mode.



## 4. Sleep Mode powers down in the dark

Sleep-when-it-is-dark feature activates whenever the lights go off. This energy-saving instant boiling water feature is a world first for Zenith.



## 5. Programmable 24/7 on/off power clock

The 24/7 on/off power clock can disconnect the power during the day, evenings or weekends. You can pre-set the power-on and power-off times twice daily each day for a seven day period.



### Zenith Autoboil

Thermostatically controlled instant boiling water system

Capacities 1.5, 3.0, 5.0, 7.5, 15, 25 and 40 litre.  
(Fascia on 15 - 40 litre models not as shown).  
Cups at a time 9, 18, 30, 45, 90, 150 or 250.  
Recovery rate 100 cups/hr (1.5 and 3.0 litres).  
Recovery rate 150 cups/hr (5, 7.5 and 15 litres).  
Recovery rate 180 cups/hr (25 litres)  
Recovery rate 360 cups/hr (40 litres).

Simple to use, with two-way safety tap.  
Fingertip tap control for filling cups.  
Tap locks ON to fill pots hands-free.

Twin-chamber boiling technology.  
Stainless steel boiling chamber.  
Premium insulation.  
Simple-to-service dual tank port.  
Power on indicator.  
Chrome plated brass tap.  
White steel case.  
Option of 5 micron or Sub micron triple action filtration

#### Three year warranty

*Extended warranty: three year pro-rata warranty on tank; two year conditional warranty on heater; first year parts and labour, second year parts only.*



### New electronic Zenith Hydroboil

Electronically controlled instant boiling water system

Capacities 3.0, 5.0 and 7.5 litre.  
Cups at a time 18, 30 or 45.  
Recovery rate 100 cups/hr (3.0 litres).  
Recovery rate 150 cups/hr (others).

New cool-to-touch two-way safety tap.  
Fingertip tap control for filling cups.  
Tap locks ON to fill pots hands-free.  
Child-proof safety lock.  
Lock indicator on display panel.  
Variable boiling temperature control.  
Factory temperature set to 98°C.  
Touch-panel function setting."

Twin-chamber boiling technology.  
Stainless steel boiling chamber.  
Simple-to-service dual tank port.  
New energy-saving Power-Pulse™.  
Sleep mode when idle 2 or 4 hours.  
Sleep mode when lights go out.  
Inbuilt twice-a-day on/off 24/7 clock.  
Signals when filter change is due.  
Option of 5 micron or Sub micron triple action filtration

#### Five year warranty

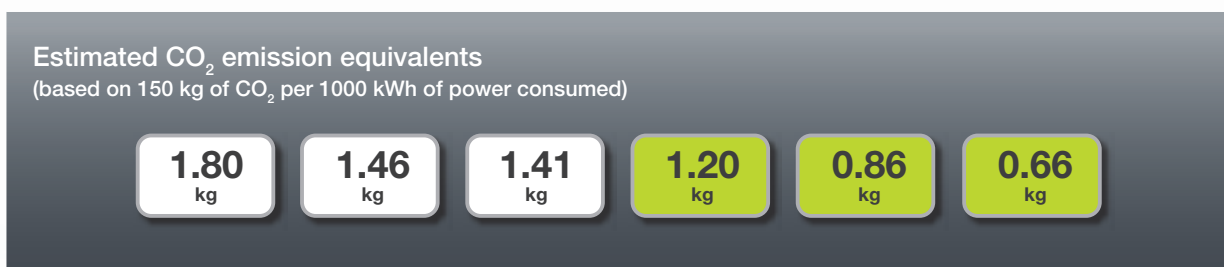
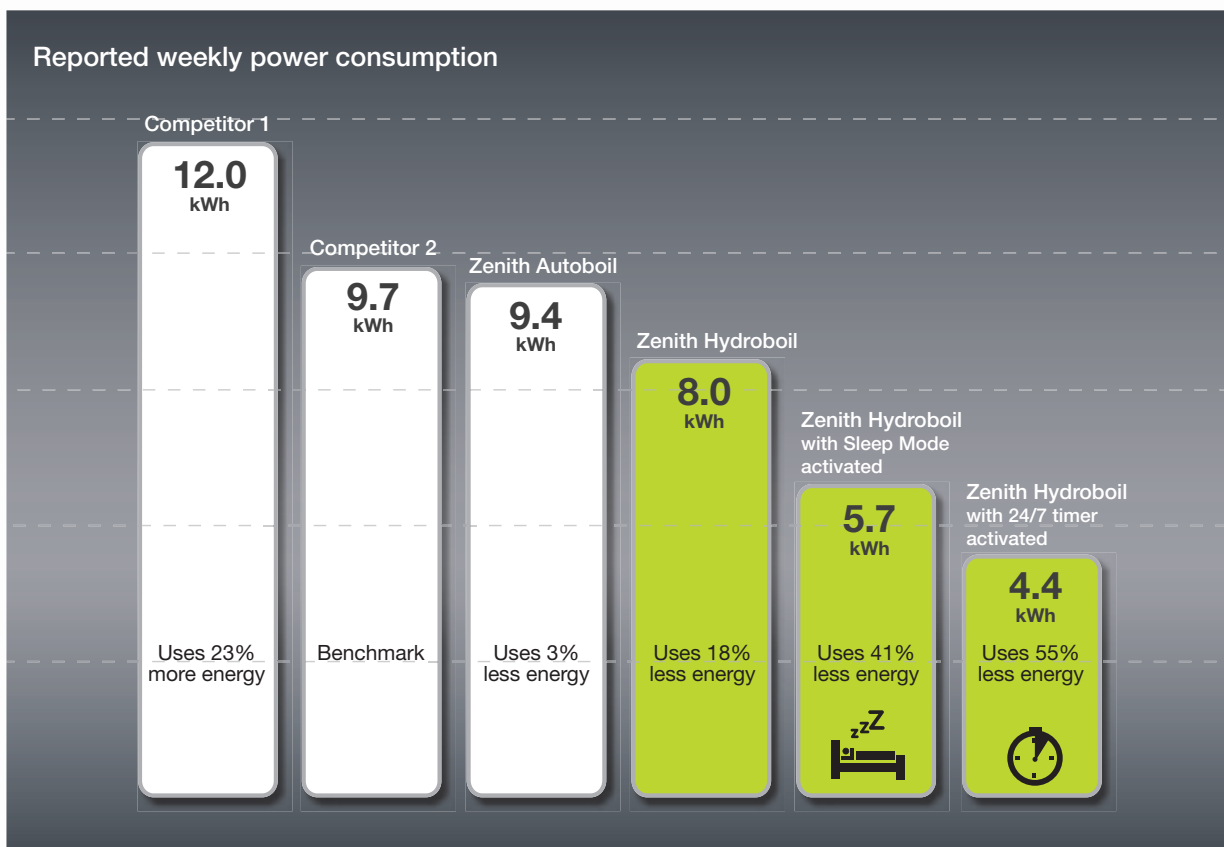
*Extended warranty: five year pro-rata warranty on tank; two year conditional warranty on heater; first and second year parts and labour.*



# New electronic Zenith Hydroboil: the most energy-efficient instant boiling water system yet

Typical results from laboratory testing of five-litre instant boiling water systems are shown below.

- Tests were conducted on M1000 AMPY metering equipment 2706306, 2706307 and 2306308.
- Table shows estimated weekly consumption without provision for water draw-off.
- Each 167 ml cup drawn off = approximately an added 17 watt hours of power, or \$0.002 per cup.
- Estimated power usage is based on continuous operation except where noted.
- Results, sleep mode = 7 day test, sleep mode effective 7 pm to 7 am Mon-Fri, all day Sat/Sun.
- Results, 24/7 on/off timer = 7 day test, set to power OFF 5 pm to 7 am Mon-Fri, all day Sat/Sun.





# Choosing the right capacity to meet your needs is easy

1. Estimate the number of cups of boiling water required at any one time.
2. Check capacities under the heading of “cups at one time” in the table below.
3. Choose a Zenith instant boiling water system giving the number of cups required.
4. Check case dimensions to ensure top and side clearances can be allowed for.

Remember: busy kitchens may need more than one Zenith to avoid the risk of a queue forming during peak periods.

## Product Selection Table

Zenith Product	Capacity	Cups at one time	Recovery Cups hr	Power Rating kW	Filtered	Models				Dimensions (mm) W x D x H
						White Case		Stainless Steel Case		
						Order Code	Model No	Order Code	Model No	
Zenith Hydroboil (a)	3.0 L	18	100	1.5	Yes	303662	HBE6-003	303661	HBE6-103	289 x 180 x 431
Zenith Hydroboil (a)	5.0 L	30	150	2.4	Yes	305662	HBE6-005	305661	HBE6-105	318 x 198 x 465
Zenith Hydroboil (a)	7.5 L	45	150	2.4	Yes	307662	HBE6-007	307661	HBE6-107	318 x 198 x 578
Zenith Auto boil	1.5 L	9	100	1.5	Yes	01652	AB001	-	-	289 x 180 x 335
Zenith Auto boil	3.0 L	18	100	1.5	Yes	03652	AB003	-	-	289 x 180 x 431
Zenith Auto boil	5.0 L	30	150	2.4	Yes	05652	AB005	-	-	318 x 198 x 465
Zenith Auto boil	7.5 L	45	150	2.4	Yes	07652	AB007	-	-	318 x 198 x 578
Zenith Auto boil	15 L	90	150	2.4	Yes	11652	AB015	-	-	390 x 299 x 600
Zenith Auto boil	25L	150	180	3.6	Yes	12652	AB025	-	-	390 x 299 x 780
Zenith Auto boil	40L	250	360	6	Yes	04652	AB040	-	-	515 x 284 x 840

Standard cup = 167 ml

(a) Supplied with black tap until 2009 models are available.

Do you need any of these accessories for your installation?

Zenith Five Star Water Filtration 5 Micron Kit - order code 28012NZ.

Zenith Triple Action Water Filtration Sub Micron Kit - order code 28015NZ.

Zenith Five Star Water Filtration Cartridge for regular filter replacement – order code 28002NZ.

Zenith Triple Action Water Filtration Cartridge for regular filter replacement - order code 28005NZ.

Zenith Wall Mounted Tun Dish for installation of your system with concealed vent plumbing – order code 99017NZ.

Zenith Sink Mounted Tun Dish for installation of your system with vent discharging over sink – order code 99018NZ.

Zenith Drained Drip Tray for installation over a kitchen bench without a draining board – order code 99056NZ.

Zenith Portable Drip Tray for installation where no drip drainage can be provided – order code 99043NZ.

How often should Zenith water filtration cartridges be replaced?

For trouble-free operation, Zenith filter cartridges should be replaced at least once each 12 months.

Replacement frequency may be affected by heavy usage or by contaminants in the water supply.

It is essential that filter cartridges be replaced only with genuine Zenith Five Star filter cartridges.

Regular replacement can be arranged with your installer or by contacting Zenith on 0800 558 055.

How frequently should your Zenith systems be inspected?

Zenith maintains a network of comprehensively-trained service technicians and service agents to deal promptly with any emergencies.

A range of Preventive Maintenance Plans is also available, providing an annual checkup to help keep your Zenith system in first-class order.

Call Zenith on 0800 558 055 for details and a free Maintenance Plan quotation to meet your needs.

# Installation is as simple as **A-B-C**

## A. Location

The system should be installed over a sink draining board or over a bench top equipped with a portable or plumbed drip tray. Tap outlet clearance to sink should be no more than 200 mm unless pot filling requires greater. Service access clearances must be at least 150 mm above, 65 mm to left, 20 mm to right.

The vent within the case must discharge to a safe visible position as, under certain conditions, the vent may discharge cold water, boiling water, and/or steam. The vent pipe outlet must be connected via a tun dish to a 12.7 mm OD copper vent pipe which has a continuous fall, is no more than 3 metres long, and has no more than 3 right angle bends.

## B. Electrical

The system should be plugged to a 10 amp GPO delivering 220–240 V AC 50 Hz within 1500 mm. For a neat concealed electrical connection, you can connect cable from the rear directly to the internal terminal block. Installation must comply with current AS/NZS 3350 wiring regulations.

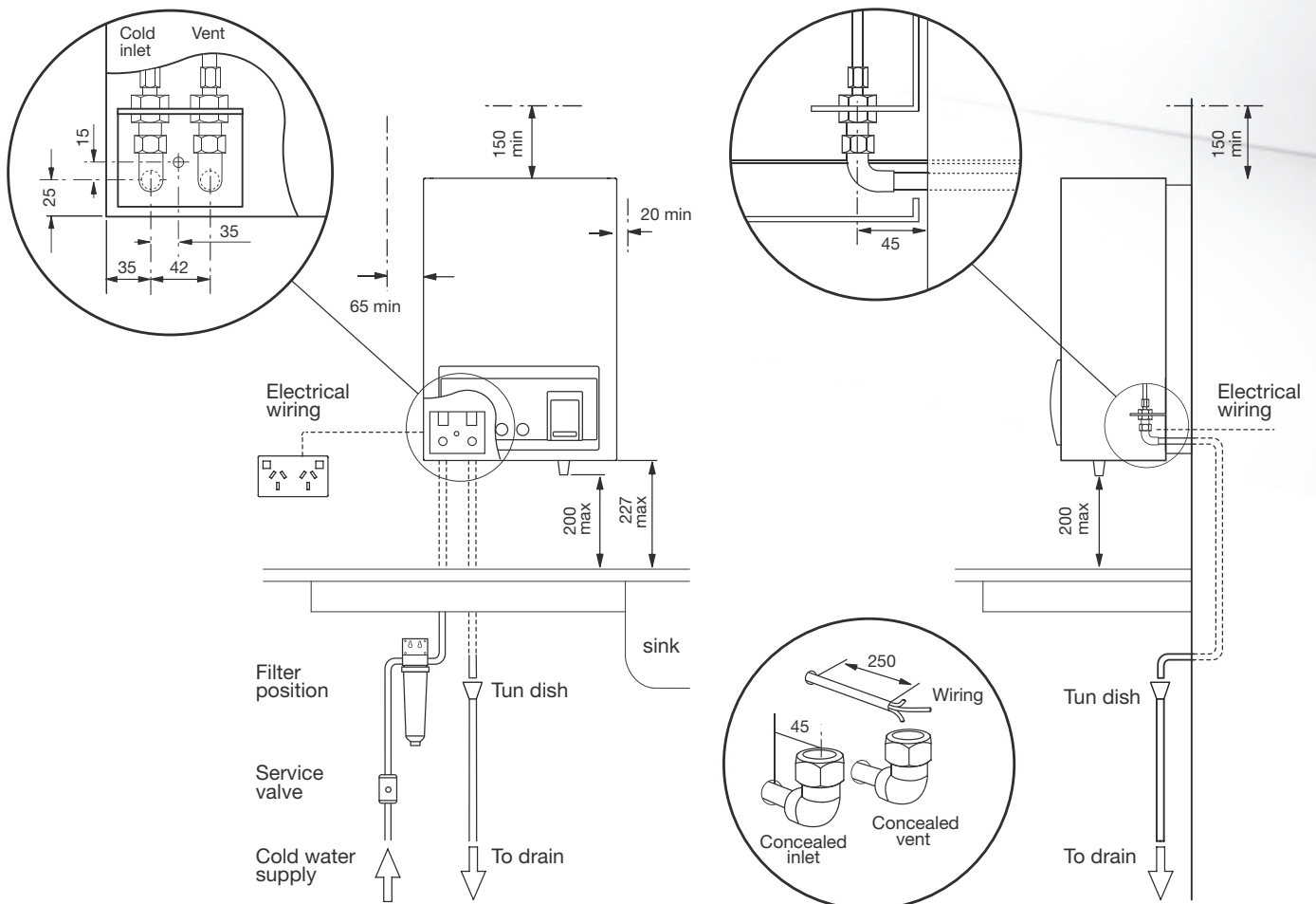
## C. Plumbing

The system must be installed by a qualified tradesperson and in accordance with the instructions supplied with the system and AS/NZ 3500 plumbing regulations. The water supply must be potable (drinkable) and deliver at least 2 litres per minute at a minimum dynamic pressure of 100 kPa.

A 350 kPa pressure reducing valve must be installed if water pressure is likely to exceed 700 kPa.

An isolating valve must be installed between the water supply and the system. For a concealed plumbing connection, connect inlet and vent pipes from the rear via 12.7 mm capillary elbows as shown.

For an exposed plumbing connection, connect inlet and vent pipes from the base of the case directly to 12.7 mm compression fittings.





WaterMark  
Lic. WMKA00099  
AS3498 - SAIG.



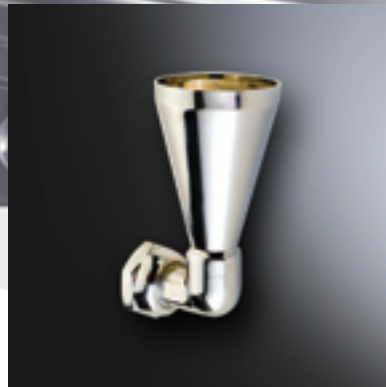
Quality  
Endorsed  
Company  
ISO 9001:2000  
Lic. QEC1913  
SAIG 08/04



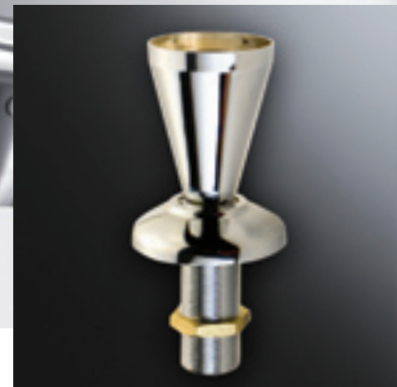
Incoming mains-water filtration  
kit – for under-sink installation  
Order code 28012NZ or 28015NZ



Portable drip tray – for Zenith  
Hydroboil installation away from sink  
Order code 99043NZ



Wall mounted tun dish – for  
concealed plumbing to drainage  
Order code 99017NZ



Sink mounted tun dish  
– to drain under sink  
Order code 99018NZ

www.zenithheaters.co.nz

**New Zealand**

Zenith Heaters Ltd  
Unit 2/15 Moselle Avenue  
Henderson  
Auckland  
Phone +64 9 838 8612  
Fax +64 9 838 8614  
zenithheaters.co.nz

**Australia**

Zip Heaters (Aust) Pty Ltd  
67 Allingham Street  
Condell Park NSW 2200  
Phone +61 2 9796 3100  
Fax +61 2 9796 3858  
zipindustries.com

**United Kingdom**

Zip Heaters (UK) Ltd  
14/15 Bertie Ward Way  
Dereham  
NR19 1TE Norfolk  
Phone +44 870 608 8888  
Fax +44 136 269 2448  
zipheaters.co.uk

**Europe**

Clage GmbH  
Pirolweg 1-5  
D-21337 Lüneburg Germany  
Phone +49 4131 89010  
Fax +49 4131 8320  
clage.de

**Africa**

Franke Manufacturing  
and Distribution SA (Pty) Ltd  
1194 South Coast Road  
Mobeni 4060 South Africa  
Phone +27 31 469 3036  
Fax +27 31 469 3052

**Asia Pacific**

Hang Tat Heating  
Systems Consultants  
Unit 1 Upper G/F  
New Port Centre  
116 Ma Tau Kok Road  
To Kwa Wan Kowloon  
Hong Kong  
Phone +852 2363 2334  
Fax +852 2764 4034

Zenith International  
Philippines Inc.  
3F Le Mar Ben Building  
747 San Bernardo Street  
Sta Cruz Manila  
Philippines 1003  
Phone +632 733 4526 loc123  
Fax +632 734 3349  
zenithinternational.ph

Multico Building Products Pte Ltd  
22A Lim Teck Boo Road  
#01-01C  
Henley Industrial Building  
Singapore 537002  
Phone +65 6 283 8888  
Fax +65 6 283 8138  
multico.com.sg

Thada Engineering Co Ltd  
54-62 Surasak Road  
Bangkok Thailand  
Phone +66 2 238 3275  
Fax +66 2 238 3277

Greenfill Trading Co  
PO Box 10534  
Taipei Taiwan  
Phone +886 22 772 9626  
Fax +886 22 772 1588

The terms 'Zenith', 'Power-Pulse', 'Hydroboil', 'Autoboil' and 'HydroTap' are trade marks.

Copyright November 2008, brochure 24112008

**zenith**<sup>o</sup>  
instant boiling water

